

# Logitech + Zoom Spaces





Introducing  
**Logitech**  
**+ Zoom**  
Spaces Catalog

Designed to showcase the full scope of spaces empowered by Logitech and Zoom solutions. Enabling limitless human connection. Giving everyone, everywhere the freedom to collaborate.



LOGITECH AND ZOOM PARTNERSHIP

# Over a decade together

**logitech** | **zoom**

Freedom to collaborate

Together, we empower teams globally with simple, scalable, and AI-driven solutions that adapt to all the unique ways people work.



# Design for Sustainability

At Logitech, we're empowering our engineering, product, and design teams to lean into the principles of Design for Sustainability. As a result, we're now accelerating our transition to more sustainable materials across our entire portfolio. How? By choosing materials made using renewable energy, using lower-carbon materials, making important modifications earlier in the design process, and shipping products in FSC™-certified packaging.

Today, two out of three Logitech products use Next Life Plastics, which are certified post-consumer recycled plastics. Choosing recycled materials ultimately lowers the carbon impact of producing these products on the environment.

**Learn more at [logitech.com/sustainabilityforbusiness](https://www.logitech.com/sustainabilityforbusiness)**

# The Role of AI with Logitech and Zoom



Artificial intelligence (AI) is transforming workplace efficiency, and Logitech, in partnership with Zoom, is at the forefront of this evolution. With AI-driven features and functions, together with Zoom's AI-driven software functionality, we are enhancing meeting experiences, fostering a stronger sense of community, and driving productivity across different spaces. From boosting productivity with Zoom AI Companion to advanced features like Zoom Rooms intelligent director and Logitech RightSight 2, our solutions help ensure seamless collaboration in any space.



Workspaces that  
inspire  
collaboration



# Personal Workspaces

Designed to accommodate individual needs, providing a private and adaptable environment for focused work, meetings, or collaboration.



## MX BRIO 705 FOR BUSINESS

Premium 4K USB-C webcam with our largest image sensor, custom-designed lens, and AI image enhancement

## MX KEYS COMBO FOR BUSINESS GEN 2

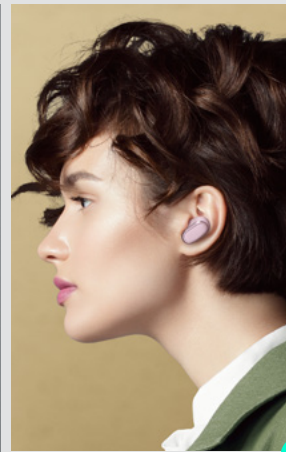
The ultimate performance combo featuring a secure wireless keyboard with Easy-Switch, along with a mouse offering MagSpeed scroll and 8K DPI sensor. Also, includes a palm rest

## ZONE WIRELESS 2

Premium Bluetooth headset with AI noise suppression, 4 noise-canceling mics, and hybrid ANC. Delivers outstanding audio on both ends

## LOGI DOCK

A managed docking station that enables easy and personalized desk booking for employees and simple device management for IT



**1. Two-way noise free calls.** AI-powered headset with hybrid ANC to help employees work without distraction. **2. Simplify your home office setup.** Instantly join, mute and unmute any Zoom meeting with a single touch and unclutter your desktop. **3. Designed for People.** Cater to different wearing styles and personal preferences with a variety of sizes, shapes, and styles. **4. Brilliant clarity with AI.** AI image enhancement provides a clear and natural image and ensures your face is naturally lit in various lighting conditions. Designed for sustainability, with built-in privacy shutter and show mode to share your notes on your desk.



# Shared Desks

Designed for multiple users to utilize on a rotating or as-needed basis. It provides a versatile and adaptable environment for individuals to collaborate, work, or hold meetings in a shared setting.



## LOGI DOCK FLEX

Facilitate onsite collaboration with Logi Dock Flex, a managed docking station

## BRIO 305

Full HD webcam with auto light correction, noise-reducing mic and privacy shutter

## SIGNATURE MK650 COMBO FOR BUSINESS

Deliver what IT needs and employees deserve. With advanced technology and designed for comfort. It's the essential wireless combo for improving employee experience

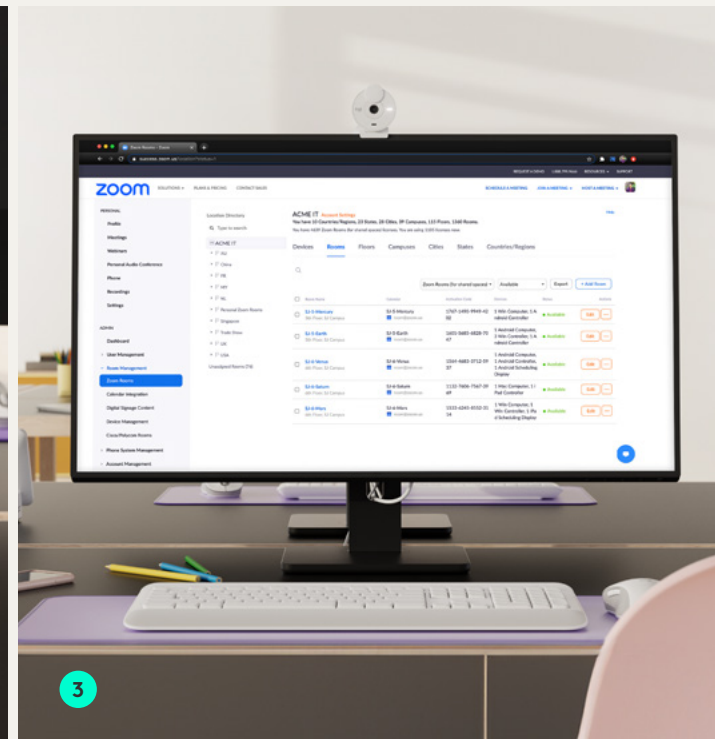


### 1. Space management and personalized desk booking.

Elevate the desk booking experience with personalized options for shared workspaces. Help employees find the perfect desk by leveraging AI Companion for room recommendations, or allow them to manually select their preferred time and space via Workspace Reservation.



**2. Single cable check in.** End-users simply plug in one USB-C cable to get access to the desk and peripherals. The same cable also securely authenticates, which prevents squatters and gives accurate reporting on workspace utilization.



**3. Easy to manage.** Deploy at scale with native integration with Zoom Device Management and Logitech Sync.

# Focus Rooms



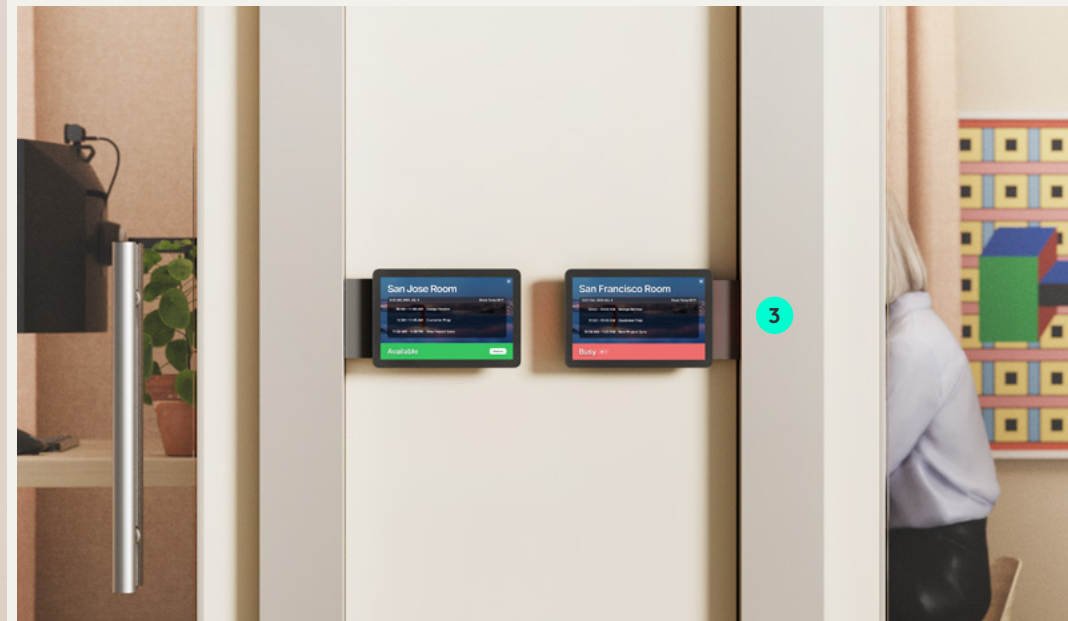
Designed for privacy, these personal spaces offer a better experience than just a laptop, accommodating up to 2 people. Ideal for focused work or quick meetings, add Workspace Reservation capabilities to ensure best usage and availability of these spaces.

## LOGI DOCK FOCUS ROOM KIT

Video conferencing solution for focus rooms with single-cable simplicity and professional-quality audio and video

## TAP SCHEDULER

Deploy as a Zoom Rooms Scheduling Display to enhance booking and indicate availability from afar



**1. Plug in and go.** Pop into a focus room and connect a laptop with a single cable. **2. One touch to join.** Integrated with Zoom, Logi Dock allows people to join any Zoom meeting and control audio and video. **3. Right place, right time.** Make it easy to see meeting details and reserve a room for ad hoc or future meetings. Easily deploy Tap Scheduler, a purpose-built scheduling panel, to help workers find and claim the right space.



# Huddle Rooms

For meetings in smaller spaces of up to 4 people, easily jump into a video-enabled huddle space for quick collaboration.

## RALLY BAR HUDDLE

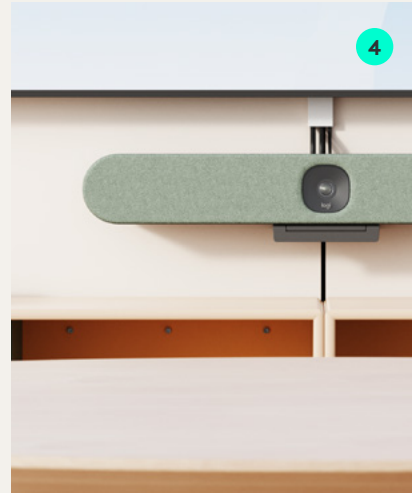
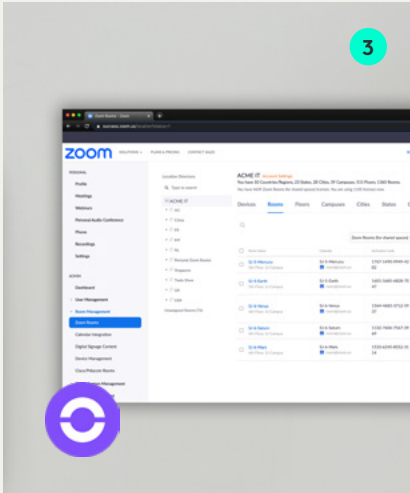
An all-in-one video bar for huddle and small rooms. It's quick to set up, easy to use, and simple to manage

## TAP IP

With touch controllers, joining meetings becomes a seamless, stress-free experience. With intuitive touch-screen operation, Tap IP takes the strain out of using a shared meeting space

## LOGITECH SCRIBE

Effortlessly share whiteboards into video meetings with Logitech Scribe, an AI-powered whiteboard camera for Zoom Meetings and Zoom Rooms



**1. Join meetings easily with Tap IP.** Effortlessly join your scheduled Zoom meetings with a single tap on the touch screen. **2. Easy to install.** With the included multi-mount, attach Rally Bar Huddle to a display, table, or wall to get the most out of your huddle room. **3. Management at scale.** Simple installation for fast deployments, optimized uptime, and remote management through Zoom Device Management or Logitech Sync. **4. Customizable covers.** Replace the default graphite cover on the video bar with options tailored to your space, such as an easy-clean cover, off-white fabric, or a custom design.



# Small Spaces

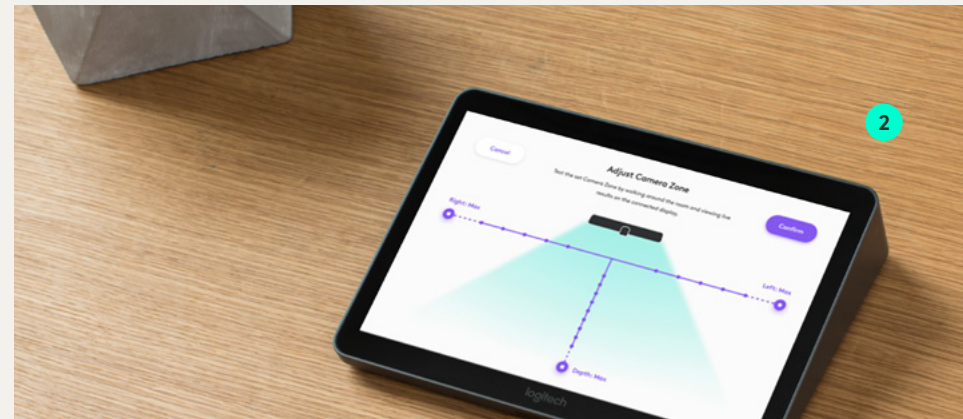
For spaces up to 6 people, add video for better hybrid collaboration, whether in an open space or closed room.



## RALLY BAR MINI

All-in-one video bar for small to medium meeting rooms with built-in AI technology, brilliant optics, and powerful audio. Connected to an interactive display to enable Zoom Rooms for Touch

**1. Zoom Rooms smart gallery** displays multiple video feeds from a single conference room. This allows the Zoom Room cameras to focus more closely on in-room participants and display these people more clearly to remote attendees. Effective collaboration between remote attendees and Zoom Room participants can be enhanced by the face-to-face meeting experience. **2. Camera Zones** eliminate distractions from individuals outside of meeting rooms when you define a specific area for the camera to actively detect and frame meeting participants. **3. Everyone is seen and heard.** AI video intelligence, advanced sound pickup, noise suppression, and continuous software improvements provide a clear and natural meeting experience for remote workers.







# Medium Rooms

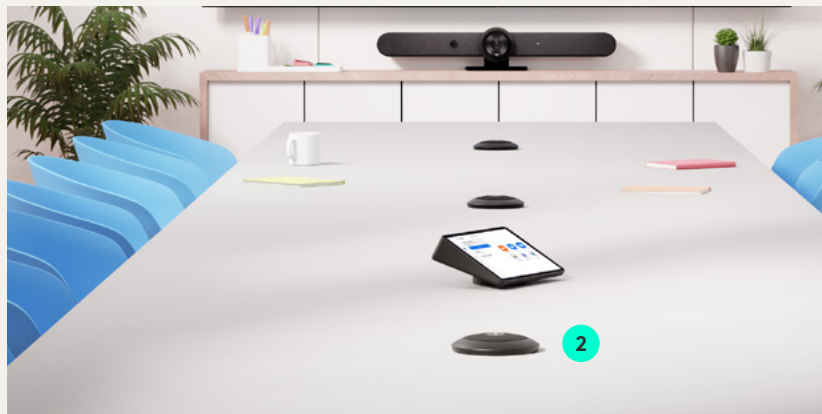
Capture faces and voices clearly in medium rooms with Rally Bar and Rally Bar Mini, with built-in AI and powerful optics and audio.

## RALLY BAR

A premier video bar for medium to large meeting rooms. Discover remarkably simple, all-in-one video conferencing with built-in AI technology, brilliant optics, and powerful audio

## TAP IP

With touch controllers, joining meetings becomes a seamless, stress-free experience. With intuitive touch-screen operation, Tap IP takes the strain out of using a shared meeting space



- 1. Smart name tags.** Make it easier for other participants to know who is in the room by applying name tags in a PC-based or Mac-based Zoom Room. Make meetings more inclusive and productive, allowing each Zoom Rooms participant to be seen and identified.
- 2. Expand the conversation.** Extend voice pick-up and mute buttons in larger rooms or spaces with tall ceilings with up to three additional Rally Mic Pods.



# Large Rooms

Get a better perspective in larger spaces with multi-camera systems from Logitech, featuring a front-of-room Rally Bar and tabletop AI companion camera, Logitech Sight.

## RALLY BAR

A premier video bar for medium to large meeting rooms. Discover remarkably simple, all-in-one video conferencing with built-in AI technology, brilliant optics, and powerful audio

## LOGITECH SIGHT

An AI-powered tabletop companion camera that works in tandem with Logitech Rally Bar or Rally Bar Mini to provide a front-and-center view of Zoom Rooms participants around the table

## TAP IP

With touch controllers, joining meetings becomes a seamless, stress-free experience. With intuitive touch-screen operation, Tap IP takes the strain out of using a shared meeting space

## LOGITECH SCRIBE

Effortlessly share whiteboards into video meetings with Logitech Scribe, an AI-powered whiteboard camera for Zoom meetings and Zoom Rooms

1

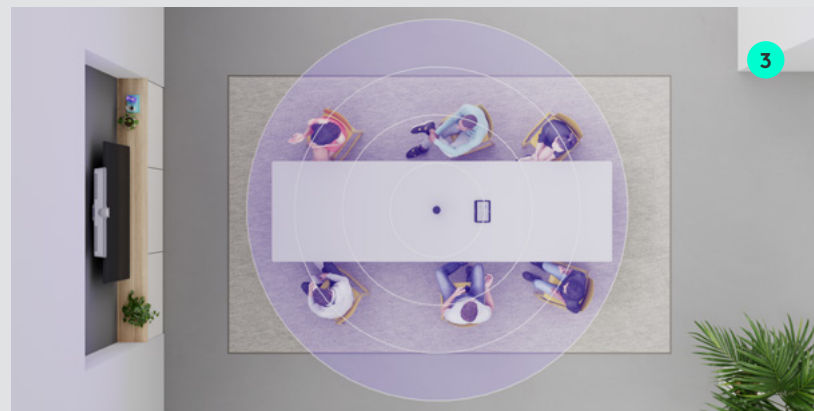


**1. Take a seat at the table.** Add a tabletop perspective to your front-of-room camera to deliver a better, more inclusive hybrid meeting experience. **2. Track conversations naturally.** Adaptive intelligence chooses the best view between Sight at the center of the table, and the camera at the front of the room, so remote participants can see the best front-facing view of each person in the room. **3. Expand the conversation.** Sight tracks active speakers using the integrated mic array, picking up conversations up to 2.3m/7.5 ft away. Add up to three additional Rally Mic Pods with Rally Bar to extend audio pick-up even further into larger rooms.

2



3



# Training Rooms Classrooms



Video-enable your training space with advanced conferencing solutions from Logitech, tailored for optimal performance in educational settings. Ideal for classrooms with rows of desks with podiums in the front corner.

## RALLY CAMERA

Rally Camera delivers premium performance in professional meeting spaces, with whisper quiet mechanical movement, 15x HD zoom, expansive 90° diagonal field of view, and a powerful 4K sensor

## RALLY BAR

A premier video bar for medium to large meeting rooms. Discover remarkably simple, all-in-one video conferencing with built-in AI technology, brilliant optics, and powerful audio

## MIC POD PENDANT MOUNT

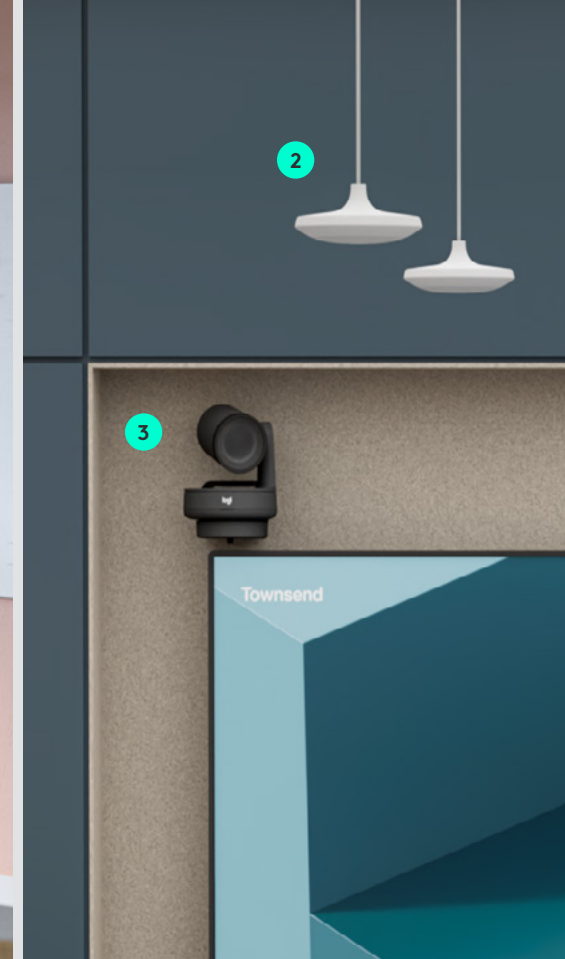
Allows you to hang Rally Mic Pods in rooms that have tall ceilings and tables that can't have mics attached or that have unique setups

## TAP IP

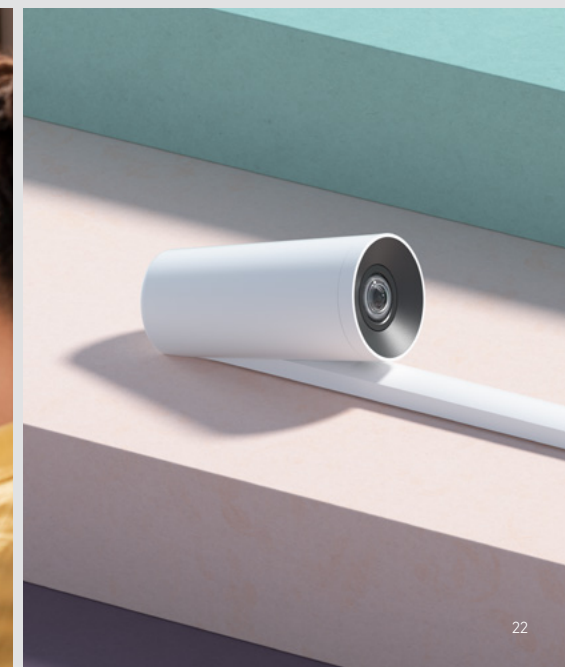
With touch controllers, joining meetings becomes a seamless, stress-free experience. With intuitive touch-screen operation, Tap IP takes the strain out of using a shared meeting space

## LOGITECH SCRIBE

Effortlessly share whiteboards into video meetings with Logitech Scribe, an AI-powered whiteboard camera for Zoom Meetings and Zoom Rooms



**1. Get everyone on board.** Effortlessly share whiteboards into video meetings with Logitech Scribe, an AI-powered whiteboard camera for Zoom Meetings and Zoom Rooms. **2. Conversations within reach.** Keep tabletops clear by mounting Rally Mic Pods to the ceiling with Pendant Mic Pod Mounts. **3. Capture the best angle.** Switch between multiple cameras in a room to capture what's important, or use multi-camera mode in Zoom Rooms to use cameras simultaneously.





# Boardrooms

Video-enable your large U-shaped room into a cutting-edge collaboration hub with advanced Logitech conferencing solutions, perfect for seamless integration with Zoom. In this particular setting, multiple Rally Cameras work seamlessly with Zoom Rooms to enable the intelligent director feature, offering better meeting equity across the room.

## RALLY CAMERA

Rally Camera delivers premium performance in professional meeting spaces, with whisper quiet mechanical movement, 15x HD zoom, expansive 90° diagonal field of view, and a powerful 4K sensor

## RALLY PLUS SYSTEM

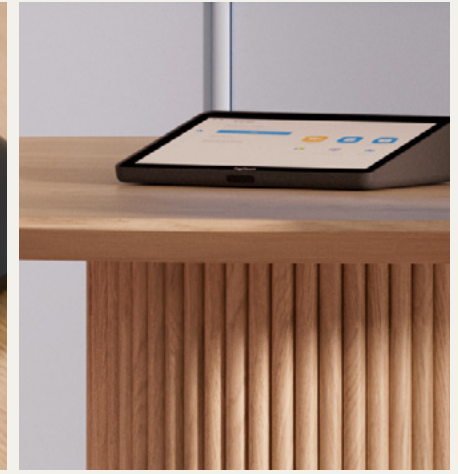
Ensure everyone is seen and heard in every Zoom Rooms with a premier modular video conferencing system for large and extra large rooms

## TAP IP

With touch controllers, joining meetings becomes a seamless, stress-free experience. With intuitive touch-screen operation, Tap IP takes the strain out of using a shared meeting space

## TAP SCHEDULER

Deploy as a Zoom Rooms Scheduling Display to enhance booking and indicate availability from afar



**1. Increase meeting equity.** AI-based intelligent director automatically provides the best close up views of in-room participants. **2. Expand the conversation.** Add and extend modular microphones while keeping a clean tabletop with optional table or ceiling mounts. **3. Companion Zoom Rooms.** Increase collaboration with Zoom Whiteboard through a touch-enabled display powered by Logitech RoomMate.



# Immersive Rooms



Video-enable spaces that are optimized for hybrid meetings with solutions that deliver immersive experiences for remote participants.

## TAP SCHEDULER

Deploy as a Zoom Rooms Scheduling Display to enhance booking and indicate availability from afar

## RALLY CAMERA

Rally Camera delivers premium performance in professional meeting spaces, with whisper quiet mechanical movement, 15x HD zoom, expansive 90° diagonal field of view, and a powerful 4K sensor

## RALLY PLUS SYSTEM

Ensure everyone is seen and heard in every Zoom Rooms with a premier modular video conferencing system for large and extra large rooms

## TAP IP

With touch controllers, joining meetings becomes a seamless, stress-free experience. With intuitive touch-screen operation, Tap IP takes the strain out of using a shared meeting space

## LOGITECH TAP RISER MOUNT

Elevated table mount with swivel and cable management for Logitech Tap and Tap IP meeting room touch controllers



- 1. Immersive collaboration.** Enhance collaboration with multiple displays to dynamically extend gallery, content, and active speaker views. Stay connected with far-end participants through AI-driven camera modes like smart gallery.
- 2. Optimized for video meetings.** Purposefully designed furniture, this curved table positions participants in front of the front-of-room camera, ensuring optimal visibility and seamless interaction.
- 3. Immersive 21:9 display.** Effortlessly engage with a large 21:9 display for a fully immersive experience.

# Digital Signage

Enhance communications with employees and guests with displays that show company info, food menus, wayfinding, and more.



## LOGITECH ROOMMATE

Android-based appliance for supported conference cameras, modular setups, and digital signage

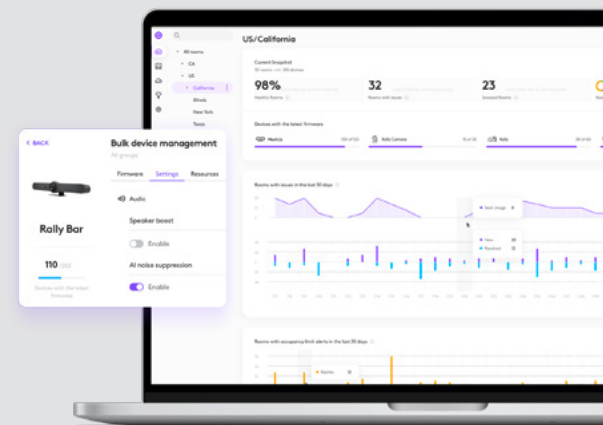
1



2



3



**1. Share announcements and information across any display.** Engage employees with corporate communications using digital signage powered by Zoom Rooms or Logitech RoomMate. **2. Single vendor experience.** Offer a seamless, single-vendor experience, providing all the equipment required from one source. With our comprehensive warranty and support plans, enjoy reliable and consistent service, all under one roof. **3. Easy to manage.** Manage all your Logitech hardware through a single portal, Logitech Sync. Enjoy seamless control, just as with your Zoom Rooms Certified hardware, all from one easy-to-use platform.



# Lobby

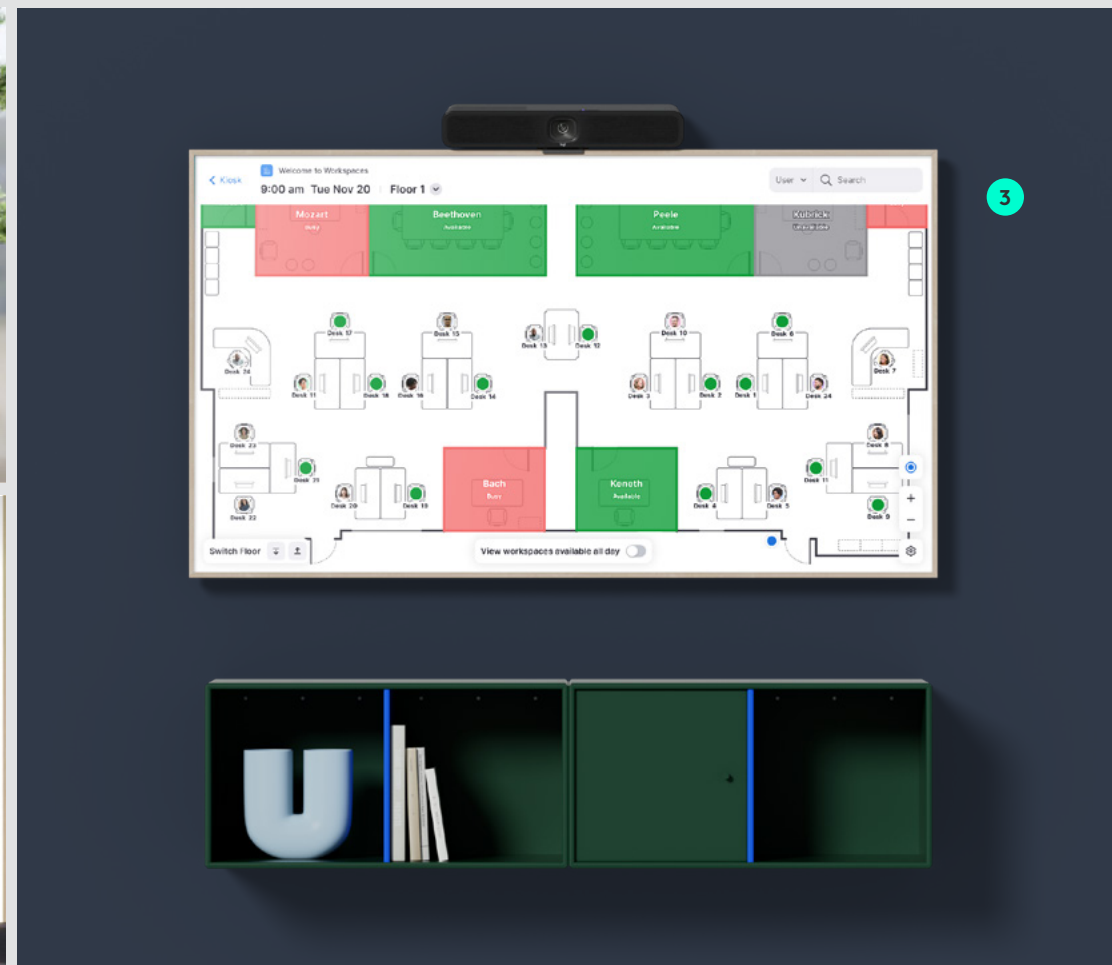
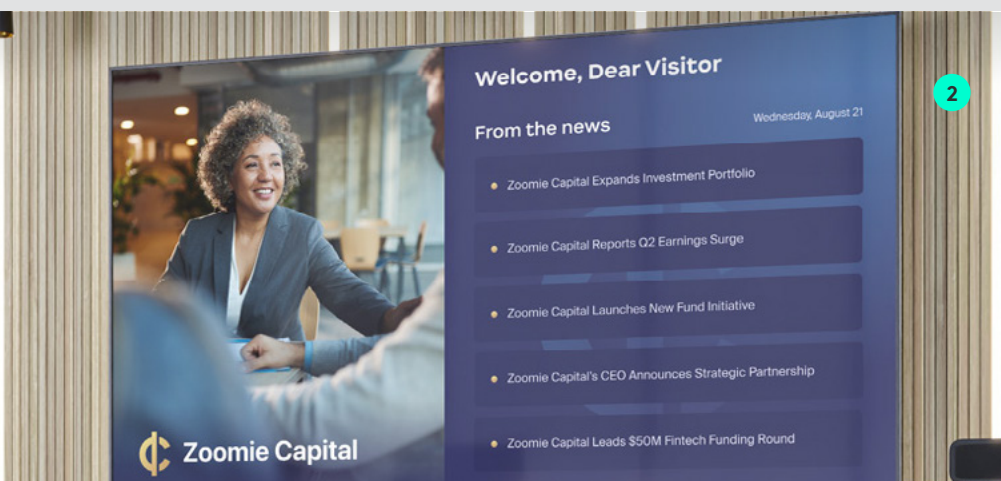
## Virtual Reception Visitor Management

Equipped to provide a seamless platform for greeting and managing visitors, this innovative setup provides clear communication and efficient visitor management, enhancing the overall experience for both guests and hosts.

### MEETUP 2

An all-in-one conference camera that brings intelligent audio and video experiences to USB-based deployments in small rooms

**1. Welcome guests and employees.** Remotely greet guests and employees with a virtual receptionist using Logitech hardware and Zoom Kiosk. **2. Beyond simple signage.** Feature videos, images, and urls at your lobby/reception with Zoom digital signage powered by Logitech RoomMate. **3. Advance workspace solutions.** Enable guests to easily reserve or find flexible workspaces ahead of time or when they arrive at the office.





# Patient Rooms

Designed for remote medical consultations and patient interactions, this space features MeetUp 2 from Logitech with seamless integration with Zoom to support clear, effective communication between healthcare providers and patients.

## MEETUP 2

All-in-one conference camera designed to enhance collaboration and productivity in any healthcare environment from mobile carts to conference rooms. Perfect for small rooms in hospitals or clinics

**1. Wipe it down.** Ideal for spaces requiring frequent sanitization, the Logitech Rally Bar Huddle offers cleanable and customizable covers, ensuring a hygienic and flexible solution for patient rooms.

**2. Connect with patients.** Ensure clear communication with AI-driven video and sound. Depending on your deployment mode in small patient rooms, you can choose between MeetUp 2, which provides intelligent audio and video experiences for USB-based setups, or Rally Bar Huddle, designed for Appliance-based deployments. **3. Set up in minutes.** Easily install with the included 3-way mount. Get up and running quickly with Zoom Rooms for seamless connectivity in no time.





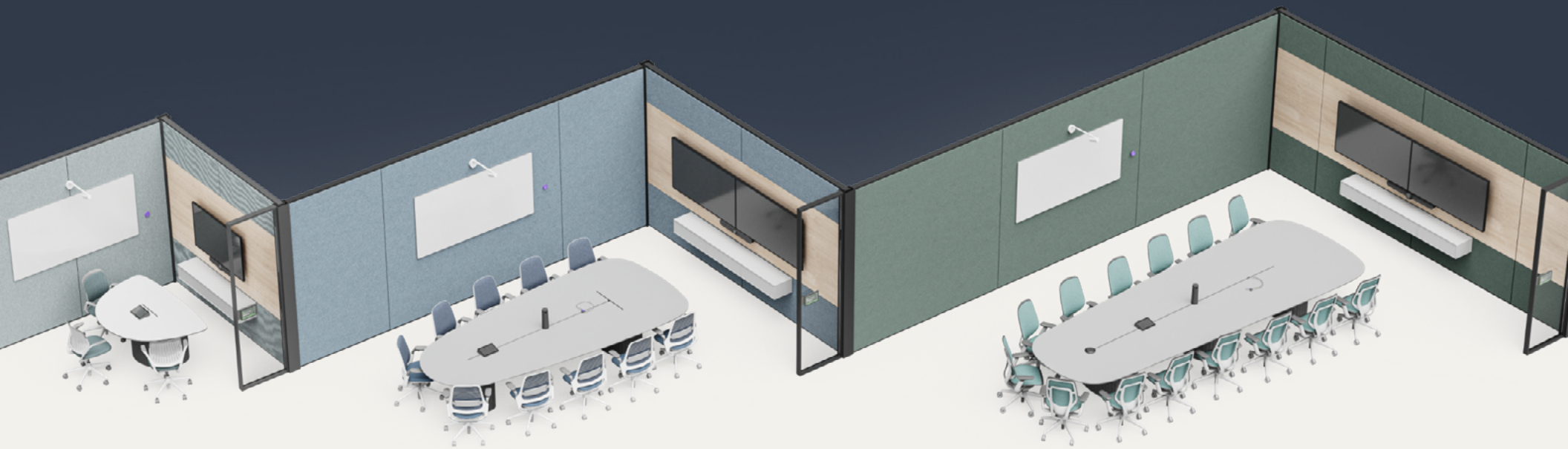
# Logitech + Zoom

## **Discover the Power of Partnership.**

Explore the Logitech and Zoom Partner Page to see how solutions seamlessly integrate for optimized collaboration. Learn more about joint innovations and find the perfect solution for your workspace.

**Learn more at**  
**[logitech.com/zoom](https://logitech.com/zoom)**





# Ready to design the perfect setup?

Use our Logitech Room Configurator to easily customize products for any room or setup. Get step-by-step guidance, visualize your configurations, and share detailed solutions tailored to your space.

**Learn more at**  
**[logitech.com/room-configurator](https://logitech.com/room-configurator)**